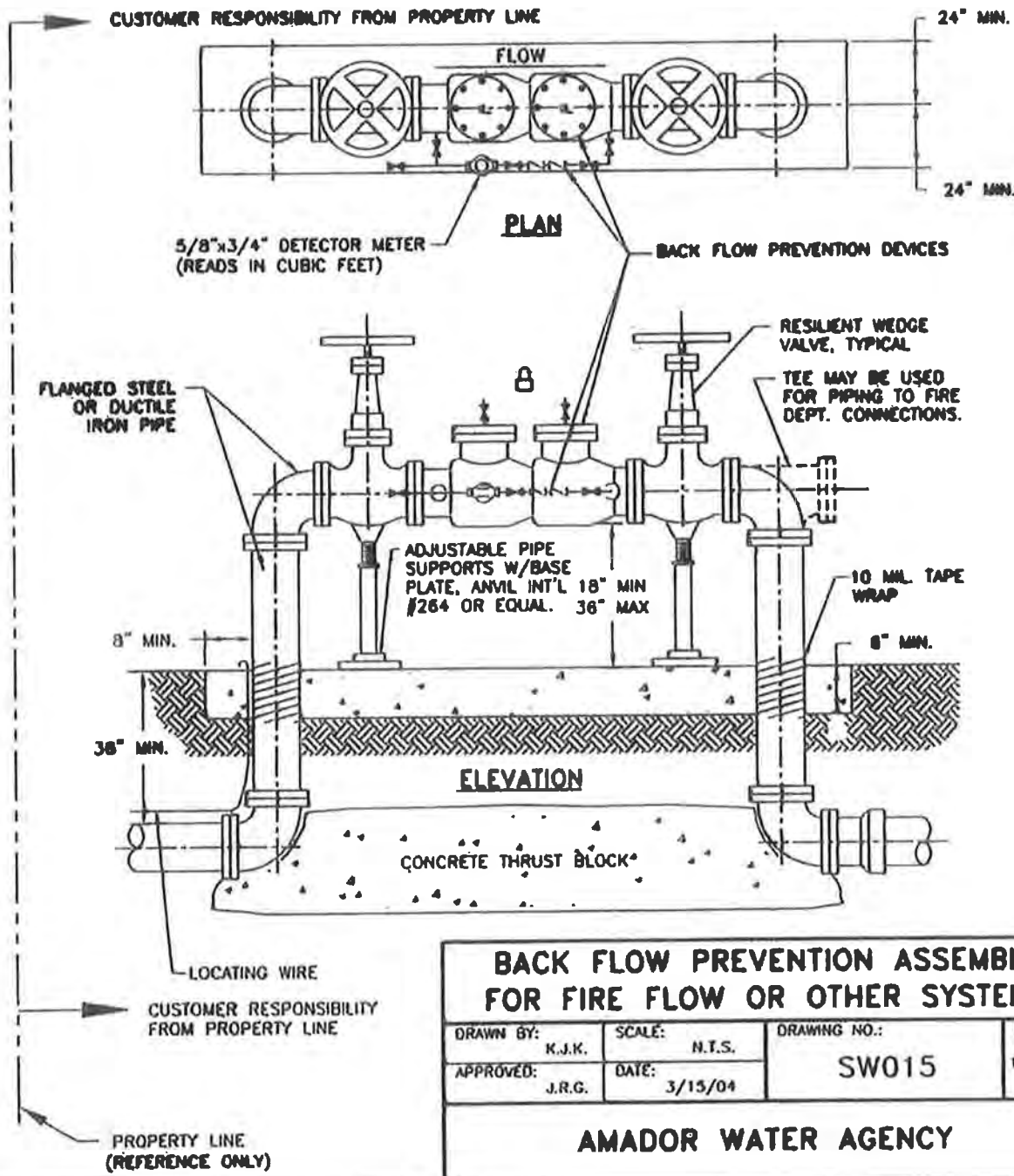


NOTES:

- 1) ALL PROPERTY HAVING A SECOND SOURCE OF WATER, SUCH AS A WELL OR RAW IRRIGATION WATER, SHALL HAVE AN APPROVED BACK FLOW PREVENTION ASSEMBLY INSTALLED ON THE PROPERTY SIDE OF AND ADJACENT TO THE WATER METER. WHERE CONSTRUCTION OR EQUIPMENT LOCATION PRESENT CITING PROBLEMS FOR THE ABOVE NOTED ASSEMBLY, A DEVIATION MAY BE GRANTED, PROVIDING SUCH REQUEST IS MADE IN WRITING PRIOR TO INSTALLATION OF THE ASSEMBLY.
- 2) NO TEES, TAPS, OUTLETS OR OTHER CONNECTIONS ARE ALLOWED ON THE AMADOR WATER AGENCY (AGENCY) SIDE OF THE ASSEMBLY. THE BACK FLOW PREVENTION ASSEMBLY SHALL BE INSTALLED AS CLOSE AS PRACTICAL TO THE MAIN AND SHALL NOT BE INSTALLED BELOW GRADE.
- 3) ALL BACK FLOW PREVENTION DEVICES SHALL CONFORM TO THE LATEST REVISED CALIFORNIA DEPARTMENT OF HEALTH SERVICES' APPROVED LIST FOR CROSS-CONNECTION.
- 4) THE TYPE OF DEVICE (REDUCED PRESSURE PRINCIPAL ASSEMBLY OR DOUBLE CHECK/DETECTOR ASSEMBLY) SHALL BE DETERMINED BY THE AGENCY.
- 5) THE CUSTOMER SHALL OWN & MAINTAIN THE BACK FLOW DEVICE AND ALL PIPING FROM PROPERTY LINE.
- 6) INITIAL INSTALLATION, TESTING, ANY ADDITIONAL RE-TESTING AND ANNUAL TESTING TO BE THE RESPONSIBILITY OF THE CUSTOMER.
- 7) VALVE REQUIRED AT MAIN PER STANDARD DETAIL SW004.
- 8) ABOVE GROUND INSULATED ENCLOSURES RECOMMENDED IN AREAS SUBJECT TO FREEZING. DEVICE SHALL BE EASILY ACCESSIBLE FOR TESTING.

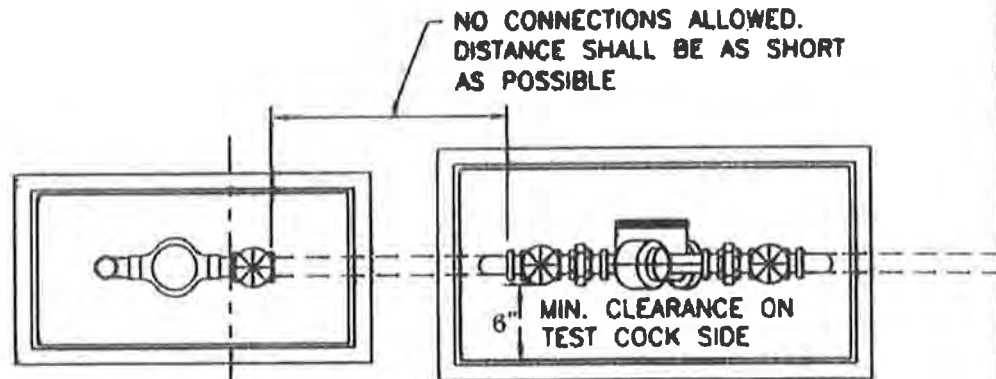


BACK FLOW PREVENTION ASSEMBLY FOR FIRE FLOW OR OTHER SYSTEMS			
DRAWN BY:	K.J.K.	SCALE:	N.T.S.
APPROVED:	J.R.G.	DATE:	3/15/04
DRAWING NO.:		REV.:	
SW015		1/30/08	

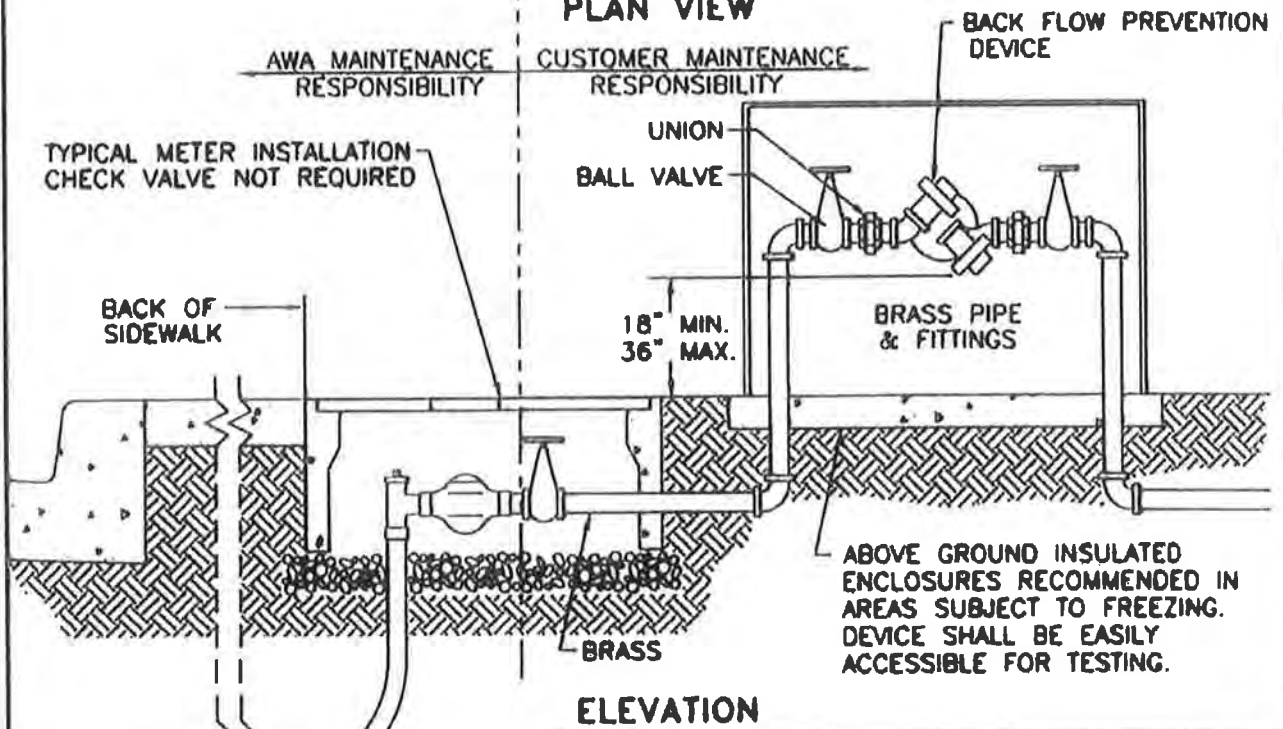
AMADOR WATER AGENCY

NOTES:

- 1) ALL PROPERTY HAVING A SECOND SOURCE OF WATER, SUCH AS A WELL OR RAW IRRIGATION WATER, SHALL HAVE AN APPROVED BACK FLOW PREVENTION ASSEMBLY INSTALLED ON THE PROPERTY SIDE OF AND ADJACENT TO THE WATER METER. WHERE CONSTRUCTION OR EQUIPMENT LOCATION PRESENT CITING PROBLEMS FOR THE ABOVE NOTED ASSEMBLY, A DEVIATION MAY BE GRANTED, PROVIDING SUCH REQUEST IS MADE IN WRITING PRIOR TO INSTALLATION OF THE ASSEMBLY.
- 2) NO TEES, TAPS, OUTLETS OR OTHER CONNECTIONS ARE ALLOWED ON THE AMADOR WATER AGENCY ('AGENCY') SIDE OF THE ASSEMBLY. THE BACK FLOW PREVENTION ASSEMBLY SHALL BE INSTALLED AS CLOSE AS PRACTICAL TO THE MAIN AND SHALL NOT BE INSTALLED BELOW GRADE.
- 3) ALL BACK FLOW PREVENTION DEVICES SHALL CONFORM TO THE LATEST REVISED CALIFORNIA DEPARTMENT OF HEALTH SERVICES' APPROVED LIST FOR CROSS-CONNECTION.
- 4) THE TYPE OF DEVICE (REDUCED PRESSURE PRINCIPAL ASSEMBLY OR DOUBLE CHECK/DETECTOR ASSEMBLY) SHALL BE DETERMINED BY THE AGENCY.
- 5) THE CUSTOMER SHALL OWN & MAINTAIN THE BACK FLOW DEVICE AND ALL PIPING FROM CUSTOMER METER.
- 6) INITIAL INSTALLATION, TESTING, ANY ADDITIONAL RE-TESTING AND ANNUAL TESTING TO BE THE RESPONSIBILITY OF THE CUSTOMER.



PLAN VIEW



ELEVATION

BACK FLOW PREVENTION ASSEMBLY

DRAWN BY: E.M.C.	SCALE: N.T.S.	DRAWING NO.:	REV.:
APPROVED: E.M.C.	DATE: 2/28/08	SW016	5/13/09

AMADOR WATER AGENCY